

# Positioning Aids Product Overview



# Pearl Technology AG

Pearl Technology AG specializes in the field of patient positioning for medical imaging and offers a broad range of durable, resistant and hygienic positioning aids for various applications.

Pearltec positioning aids are medical devices class 1 and are CE-labeled accordingly.

Computer  
Tomography



Magnetic Resonance  
Imaging



Pediatric  
Radiology



Interventional  
Radiology



We look forward to hearing from you and further familiarizing you with our products and solutions.



# Highlights

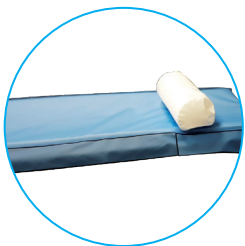


## ProBelt

### Perfectly hygienic CT belt and Fixation systems

ProBelt is the first belt system without velcro for the fixation of patients on imaging tables and is compatible with all manufacturers.

- Perfectly hygienic (PU-foil without hook and loop fastener)
- Rail adapter available for all imaging tables
- Simple adjustment to patients with hook-eyellet



## CT Table Cover

### Hard-wearing and durable CT mat protection

The CT Table Covers are protective sleeves made of PU foil and are available for CT table mats from various manufacturers.

- Durable surface even with 90% alcohol disinfection
- Extra safety thanks to specially adapted flaps
- Durable and hard-wearing materials with high-quality workmanship



## ProFoam Positioning Aids

### Perfectly hygienic Foam positioning aids

The ProFoam positioning aids are welded into a durable PU foil. They are available in the most common shapes and sizes as well as two different degrees of stability.

- Durable surface even with 90% alcohol disinfection
- Welded seams also absolutely tight in the cleaning bath

# Pearltec Immobilization Aids

## MULTIPAD Product Family

The flexible and universally applicable MULTIPAD family of products enables optimum patient placement, positioning and fixation when it comes to examinations using MRI head and extremity coils.



### MULTIPAD Standard



Art. 1012

Dimensions: 17 x 6 cm, Variable Thickness: 2 – 5 cm

The MULTIPAD Standard is particularly suitable for situations where there are no specific restrictions.



### MULTIPAD Plus



Art. 1022

Dimensions: 17 x 11 cm, Variable Thickness: 2 – 5 cm

The MULTIPAD Plus is particularly suitable to fill larger gaps.



### MULTIPAD Slim



Art. 1071

Dimensions: 17 x 9 cm, Variable Thickness: 1 – 3 cm

The MULTIPAD Slim is particularly suitable for situations where space is limited.





### MULTIPAD Ear

Art. 1104

Dimensions: 17 x 10 cm, Variable Thickness: 1 – 4 cm

The MULTIPAD Ear is perfect for immobilizing the patient's head during MRI scans when using in-ear headphones or earplugs.

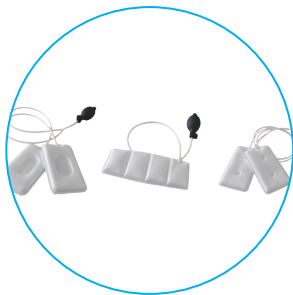


### MULTIPAD Bendy

Art. 1108

Dimensions: 23 x 9 cm, Variable Thickness: 1 – 4 cm

The MULTIPAD Bendy is perfectly suited for a wide variety of joint examinations, particularly those involving flex coils.

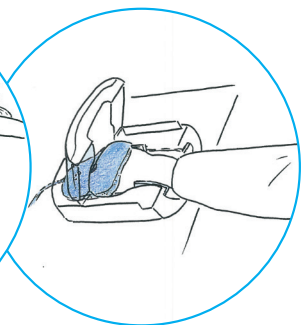
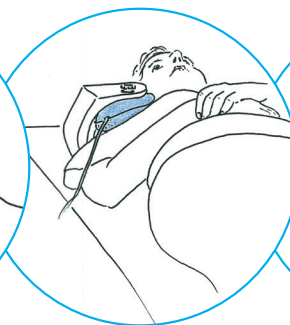
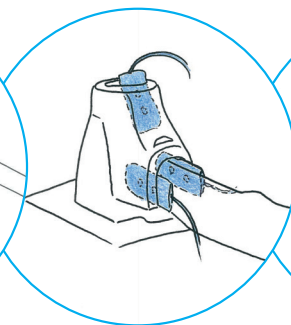
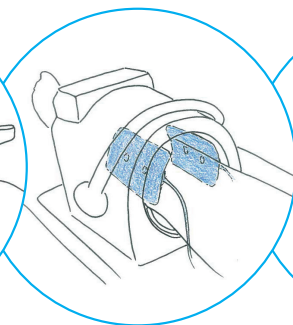
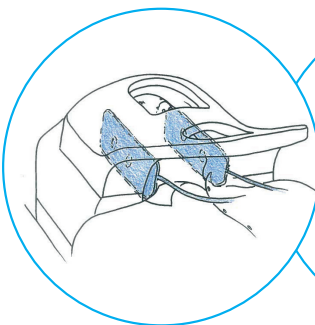


### MULTIPAD Research Kit

Art. 5004

Components:

MULTIPAD Ear, Bendy and Slim, MULTIPAD Cover.



# Pearltec Immobilization Aids

## CT HeadFix

The CT HeadFix offers an integrated, fast and hygienic positioning solution for the fixation of the head during CT scans and is compatible with the head holders of major manufacturers.



### CT HeadFix

Art. 1105

Immobilization aid for head fixation in CT head holder.  
Compatible with various CT head holders.



# Pearltec Immobilization Aids

## CRANIA

The CRANIA products offer an optimum patient placement, positioning and immobilization during head MRI examinations. The arrangement of the pearl chambers allows the suppression of movements in three axes and reduces motion artifacts.



### CRANIA Adult

Art. 1001

The CRANIA Adult is specifically suitable for research oriented head exams, such as fMRI/EEG.



### CRANIA Child

Art. 1004

The CRANIA Child is specifically suitable for pediatric head exams with children older than 3 years.

# Pearltec Immobilization Aids

## BabyFix Cocoon

The BabyFix Cocoon creates ideal conditions for a safe and careful examination procedure for newborn babies in the MRI scanner.



### BabyFix Cocoon

Art. 1107

Positioning aid for the immobilization of newborn babies (2–5kg) during MRI imaging.



### Hand Vacuum-Pump

Art. buw-5355

Hand Vacuum-Pump is MR-compatible and can be used to withdraw air from vacuum cushions.





# Pearltec Sanitary Cover

## Cover

Pearltec Sanitary Covers form an integral component for a hygienic and patient friendly application of positioning aids as well as headphones.



### Cover MULTIPAD

Art. 1101

Bag of 100 pcs

Sanitary single-use cover for MULTIPAD product family.



### Cover Headphones

Art. 1106

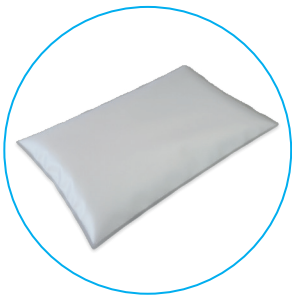
Bag of 100 pcs

Sanitary single-use cover for headphones.

# Pearltec Positioning Aids

## PearlFit

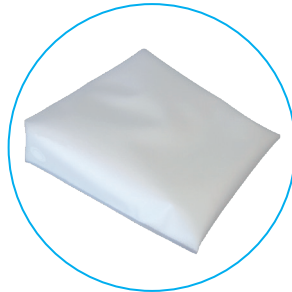
PearlFit positioning aids can be used for stable but yet comfortable patient positioning inside and outside the field of view during all radiological procedures.



### PearlFit Cushion

30 x 20 x 4 cm  
50 x 20 x 4 cm  
50 x 30 x 7 cm  
50 x 30 x 10 cm  
50 x 50 x 5 cm

Art. 1114  
Art. 1124  
Art. 1115  
Art. 1116  
Art. 1142



### PearlFit Wedge

26 x 25 x 7 cm  
30 x 50 x 15 cm  
56 x 50 x 25 cm

Art. 1117  
Art. 1138  
Art. 1132



### PearlFit Roll

Ø = 18, L = 40 cm  
Ø = 18, L = 50 cm

Art. 1112  
Art. 1113





### PearlFit Flex 3

Art. 1119

The PearlFit Flex 3, with a size of 90x50x7 cm can be used as either a cushion, a wedge or roll and can therefore be used for a broad range of examinations.



### PearlFit Head/Neck

Art. 1121

The PearlFit Head/Neck is used to support the patient's head when lying in supine position.



### PearlFit Forehead

Art. 5005

The PearlFit Forehead consists of two components and is used to support the patient's head in prone position.



# Pearltec Positioning Aids

## PearlFit Vac

PearlFit Vac positioning aids become stable by withdrawing air and allow a reproducible patient positioning.



### PearlFit Cushion Vac

50 x 20 x 4 cm  
50 x 30 x 5 cm  
50 x 50 x 5 cm  
90 x 60 x 5 cm  
130 x 60 x 5 cm  
200 x 75 x 5 cm

Art. 1131  
Art. 1188  
Art. 1143  
Art. 1144  
Art. 1189  
Art. 1190



### PearlFit Wedge Vac

26 x 25 x 7 cm  
30 x 50 x 15 cm  
56 x 50 x 25 cm

Art. 1128  
Art. 1139  
Art. 1133



### PearlFit Head/Neck Vac

Art. 1130

The PearlFit Head/Neck Vac is used to support the patient's head when lying in supine position.



### Hand Vacuum-Pump

Art. buw-5355

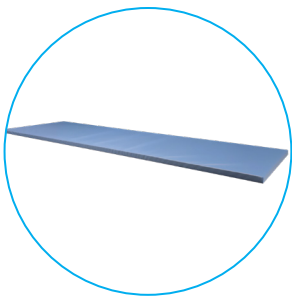
The Hand Vacuum-Pump is MR-compatible and can be used to withdraw air from vacuum cushions.

# Pearltec Positioning Aids

## ProFoam Table Mat

The ProFoam Table Mat products are made of a dimensionally stable foam material and are welded into a durable PU foil.

They are available in two different sizes and two different versions. ProFoam table mats are compatible with all common imaging tables.



### ProFoam Table Mat (anti-slip)

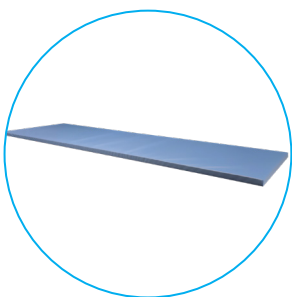
200 x 55 x 3 DS

Art. 1199

180 x 50 x 3 DS

Art. 1200

The top and bottom of the ProFoam Table Mat DS is made of pure PU foil. Thanks to its anti-slip bottom it stays in the right position.



### ProFoam Table Mat (slippery)

200 x 55 x 3 DSR

Art. 1201

180 x 50 x 3 DSR

Art. 1202

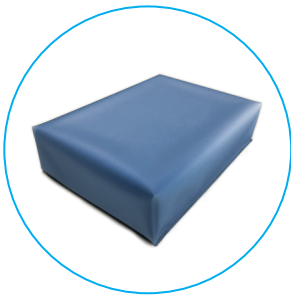
The ProFoam Table Mat DSR is made with textile-reinforced PU foil on the bottom and allows effortless repositioning of the patient thanks to its sliding properties.



# Pearltec Positioning Aids

## ProFoam-soft

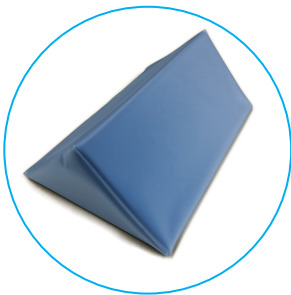
The ProFoam positioning aids are made of a soft foam material and are welded into a durable PU foil. They are available in the most common shapes and sizes and are suitable for a wide range of applications.



**ProFoam Plate**

25 x 18 x 5 cm

Art. 1150



**ProFoam Wedge 45**

18 x 25 x 12 cm

18 x 11 x 5 cm

36 x 25 x 12 cm

50 x 25 x 12 cm

60 x 25 x 12 cm

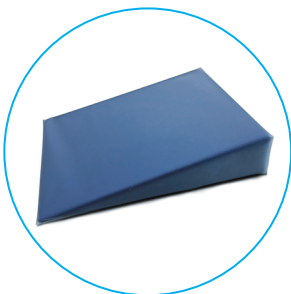
Art. 1151

Art. 1153

Art. 1154

Art. 1193

Art. 1155



**ProFoam Wedge 15 / 30**

26 x 25 x 7 cm (15 degree)

18 x 25 x 7 cm (15 degree)

18 x 23 x 7 cm (30 degree)

Art. 1152

Art. 1195

Art. 1197

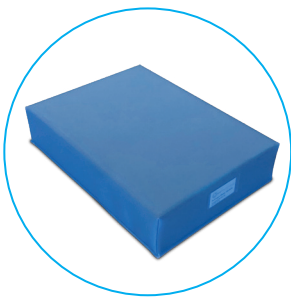
Despite intense use and frequent disinfection, ProFoam surfaces remain intact and thus perfectly hygienic.



# Pearltec Positioning Aids

## ProFoam DS–stable/hard

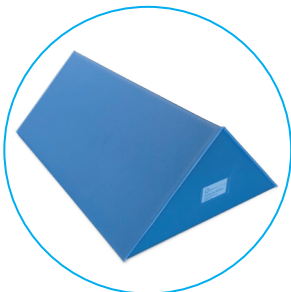
The ProFoam positioning aids DS are made of a dimensionally stable foam material and are welded into a durable PU foil. They are available in the most common shapes and sizes and are suitable for a range of applications.



### ProFoam Plate DS

25 x 18 x 5 cm  
50 x 30 x 20 cm

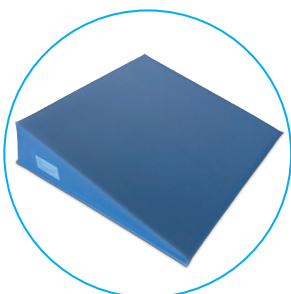
Art. 1158  
Art. 1192



### ProFoam Wedge 45 DS

18 x 25 x 12 cm  
18 x 11 x 5 cm  
36 x 25 x 12 cm  
50 x 25 x 12 cm  
60 x 25 x 12 cm

Art. 1159  
Art. 1161  
Art. 1162  
Art. 1194  
Art. 1163



### ProFoam Wedge 15 / 30 DS

26 x 25 x 7 cm (15 degree)  
18 x 25 x 7 cm (15 degree)  
18 x 23 x 10 cm (30 degree)

Art. 1160  
Art. 1196  
Art. 1198

# Pearltec Belt Systems

## ProBelt

ProBelt is the first completely hook-and-loop-free belt system and allows a perfectly hygienic fixation of patients on the CT.



### ProBelt

200 R2 for GE	Art. 1170
200 R3 for Siemens and Philips	Art. 1171
200 T5 for Canon	Art. 1172
200 J10 for Philips	Art. 1241
200 Extension for all ProBelt 200 products	Art. 1213

350 R2 for GE	Art. 1214
350 R3 for Siemens and Philips	Art. 1215
350 T5 for Canon	Art. 1216
350 J10 for Philips	Art. 1242
350 Extension for all ProBelt 350 products	Art. 1217

The ProBelt belts are available in widths of 200 mm and 350 mm, are inserted into the dedicated table rail and closed by means of a hook eyelet.

[Watch Video](#)



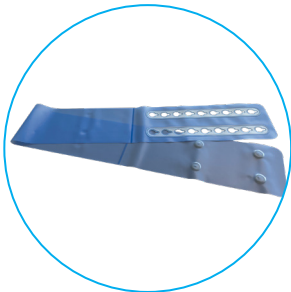
### ProBelt 200 Thorax PFC

Art. 1173

The ProBelt Thorax System helps to fix the arms to the patient's upper body and is especially used for polytrauma and thoracic abdomen CT examinations.

[Watch Video](#)





### ProBelt Wrap

200 (L = 200 cm, W = 20 cm)

Art. 1187

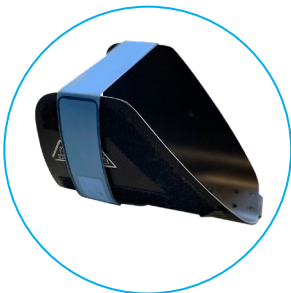
70 (L = 145 cm, W = 7 cm)

Art 1220

The ProBelt Wrap is placed underneath the mat and wrapped around the patient for a proper stabilization. The ProBelt Wrap is fastened with a hook eyelet.



[Watch Video](#)



### ProBelt VL/VH

50 VL for Canon, Philips and Siemens

Art. 5008

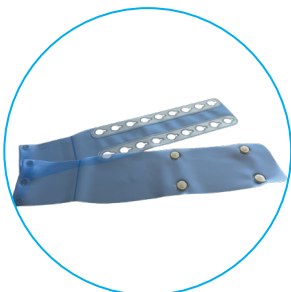
50 VH for GE

Art. 5009

ProBelt 50 VL/VH are attached to the CT cradle and wrapped around the patient's forehead. ProBelt 50 are compatible with CT head holders of all common equipment manufacturers and offer a quick and hygienic head stabilization.



[Watch Video](#)



### ProBelt for Philips MRI

140 MRI P

Art. 1219

140 MRI P Extension

Art. 1240

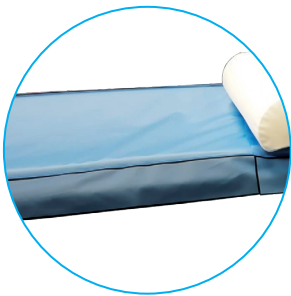
The ProBelt 140 MRI P is attached to the existing Philips rails. The ProBelt 140 MRI P is fastened with a hook eyelet.



# Pearltec Table Cover

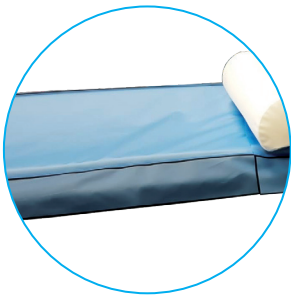
## CT Table Cover

The CT Table Covers are protective sleeves made of PU foil and are available for CT table covers from various manufacturers. The specially designed flaps provide additional safety and the high-quality materials and workmanship make the product hard-wearing and durable.



### CT Table Cover for Canon

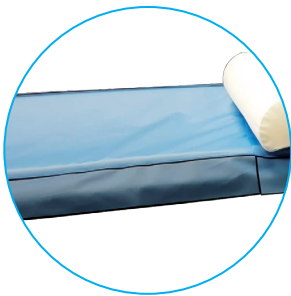
2090 mm mat length	Art. 1164
2360 mm mat length	Art. 1166
1790 mm mat length	Art. 1165
1860 mm mat length	Art. 1167
2070 mm mat length	Art. 1168
400 mm table extension	Art. 1169
310 mm table extension	Art. 1175



### CT Table Cover for Siemens

2190 S mm mat length	Art. 1177
2190 S46 mm mat length, narrow	Art. 1212
2170 S46 mm mat length, thin	Art. 1211
2400 S mm mat length	Art. 1209
2400 S46 mm mat length, narrow	Art. 1223
350 S mm table extension	Art. 1210

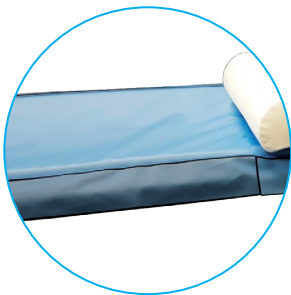




### CT Table Cover for GE

2170 G mm mat length  
 2720 G mm mat length  
 2580 G mm mat length  
 2100 G mm mat length  
 2630 G mm mat length  
 270 G mm table extension  
 370 G mm table extension

Art. 1184  
 Art. 1205  
 Art. 1206  
 Art. 1207  
 Art. 1221  
 Art. 1185  
 Art. 1208



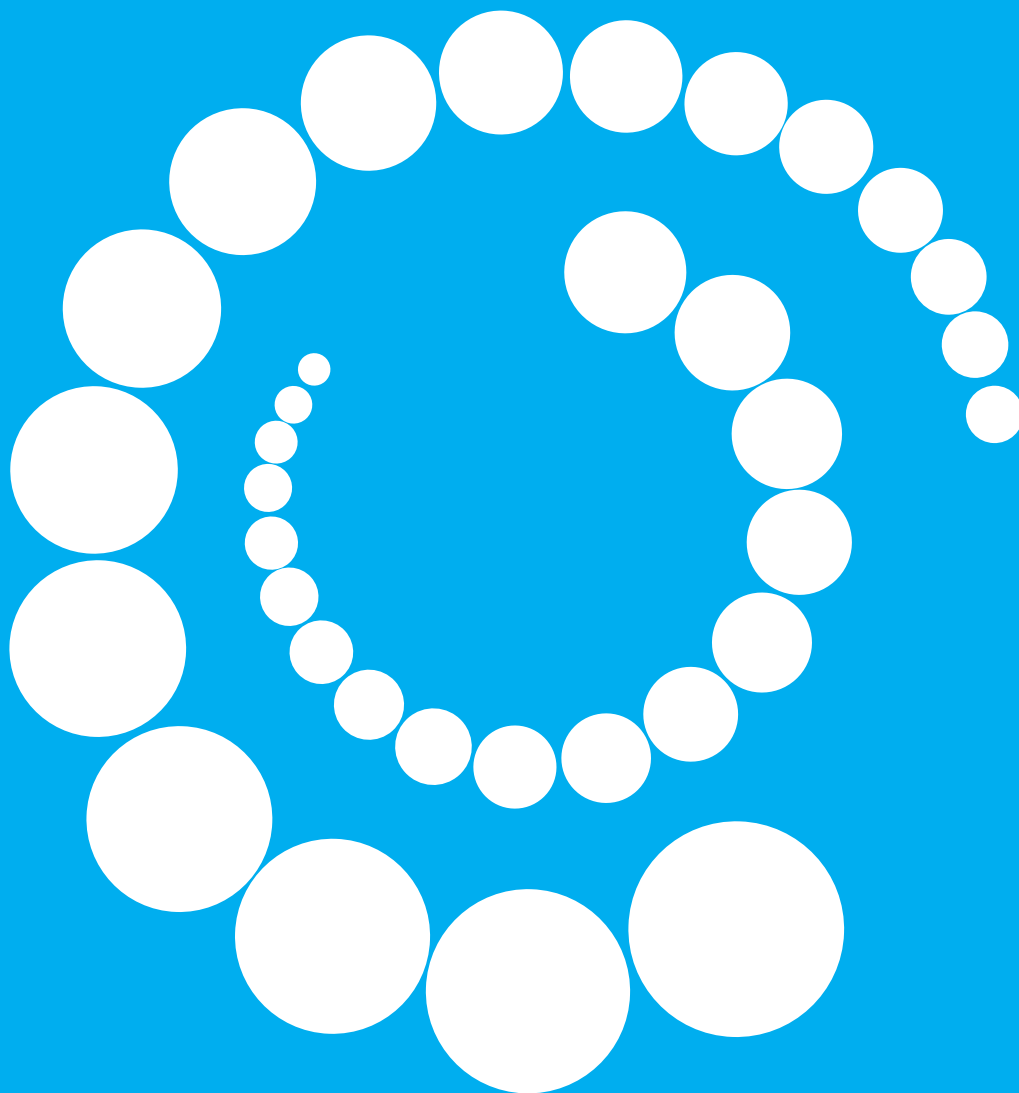
### CT Table Cover for Philips

2220 P mm mat length  
 2320 P44 mm mat length  
 2100 P mm mat length  
 2450 P mm mat length  
 2580 P44 mm mat length  
 2700 P44 mm mat length

Art. 1183  
 Art. 1203  
 Art. 1204  
 Art. 1224  
 Art. 1239  
 Art. 1244



[Watch Video](#)



Pearl Technology AG  
Wiesenstrasse 33  
8952 Schlieren  
+41 43 535 08 40  
[info@pearl-technology.ch](mailto:info@pearl-technology.ch)  
[www.pearl-technology.ch](http://www.pearl-technology.ch)