

Positioning Aids Product Overview



Pearl Technology AG

Pearl Technology AG specializes in the field of patient positioning for medical imaging and offers a broad range of durable, resistant and hygienic positioning aids for various applications.

Pearltec positioning aids are medical devices class 1 and are CE-labeled accordingly.

Computer
Tomography



Magnetic Resonance
Imaging



Pediatric
Radiology



Interventional
Radiology



We look forward to hearing from you and further familiarizing you with our products and solutions.



Highlights

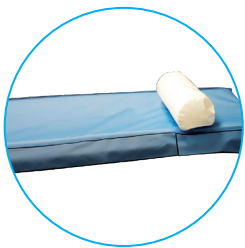


ProBelt

Perfectly hygienic CT belt and Fixation systems

ProBelt is the first belt system without velcro for the fixation of patients on imaging tables and is compatible with all manufacturers.

- Perfectly hygienic (PU-foil without hook and loop fastener)
- Rail adapter available for all imaging tables
- Simple adjustment to patients with hook-eyellet



CT Table Cover

Hard-wearing and durable CT mat protection

The CT Table Covers are protective sleeves made of PU foil and are available for CT table mats from various manufacturers.

- Durable surface even with 90% alcohol disinfection
- Extra safety thanks to specially adapted flaps
- Durable and hard-wearing materials with high-quality workmanship



ProFoam Positioning Aids

Perfectly hygienic Foam positioning aids

The ProFoam positioning aids are welded into a durable PU foil. They are available in the most common shapes and sizes as well as two different degrees of stability.

- Durable surface even with 90% alcohol disinfection
- Welded seams also absolutely tight in the cleaning bath

Pearltec Immobilization Aids

MULTIPAD Product Family

The flexible and universally applicable MULTIPAD family of products enables optimum patient placement, positioning and fixation when it comes to examinations using MRI head and extremity coils.



MULTIPAD Standard



Art. 1012

Dimensions: 17 x 6 cm, Variable Thickness: 2 – 5 cm

The MULTIPAD Standard is particularly suitable for situations where there are no specific restrictions.



MULTIPAD Plus



Art. 1022

Dimensions: 17 x 11 cm, Variable Thickness: 2 – 5 cm

The MULTIPAD Plus is particularly suitable to fill larger gaps.



MULTIPAD Slim



Art. 1071

Dimensions: 17 x 9 cm, Variable Thickness: 1 – 3 cm

The MULTIPAD Slim is particularly suitable for situations where space is limited.



MULTIPAD Ear

Art. 1104

Dimensions: 17 x 10 cm, Variable Thickness: 1 – 4 cm

The MULTIPAD Ear is perfect for immobilizing the patient's head during MRI scans when using in-ear headphones or earplugs.

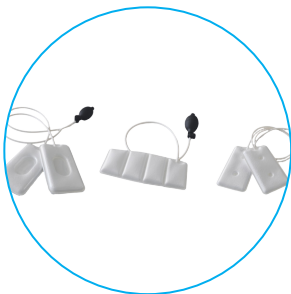


MULTIPAD Bendy

Art. 1108

Dimensions: 23 x 9 cm, Variable Thickness: 1 – 4 cm

The MULTIPAD Bendy is perfectly suited for a wide variety of joint examinations, particularly those involving flex coils.



MULTIPAD Research Kit

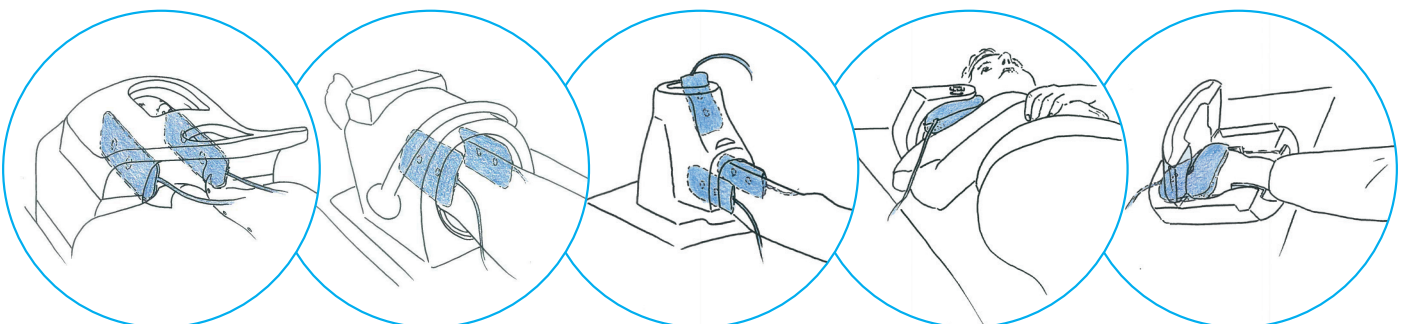
Art. 5004

Components:

MULTIPAD Ear, Bendy and Slim, MULTIPAD Cover.



[Watch Video](#)



Pearltec Immobilization Aids

CT HeadFix

The CT HeadFix offers an integrated, fast and hygienic positioning solution for the fixation of the head during CT scans and is compatible with the head holders of major manufacturers.



CT HeadFix

Art. 1105

Immobilization aid for head fixation in CT head holder.
Compatible with various CT head holders.



Pearltec Immobilization Aids

CRANIA

The CRANIA products offer an optimum patient placement, positioning and immobilization during head MRI examinations. The arrangement of the pearl chambers allows the suppression of movements in three axes and reduces motion artifacts.



CRANIA Adult

Art. 1001

The CRANIA Adult is specifically suitable for research oriented head exams, such as fMRI/EEG.



CRANIA Child

Art. 1004

The CRANIA Child is specifically suitable for pediatric head exams with children older than 3 years.

Pearltec Immobilization Aids

BabyFix Cocoon

The BabyFix Cocoon creates ideal conditions for a safe and careful examination procedure for newborn babies in the MRI scanner.



BabyFix Cocoon

Art. 1107

Positioning aid for the immobilization of newborn babies (2–5kg) during MRI imaging.



Hand Vacuum-Pump

Art. buw-5355

Hand Vacuum-Pump is MR-compatible and can be used to withdraw air from vacuum cushions.



[Read Case Study](#)



Pearltec Sanitary Cover

Cover

Pearltec Sanitary Covers form an integral component for a hygienic and patient friendly application of positioning aids as well as headphones.



Cover MULTIPAD

Art. 1101

Bag of 100 pcs

Sanitary single-use cover for MULTIPAD product family.



Cover Headphones

Art. 1106

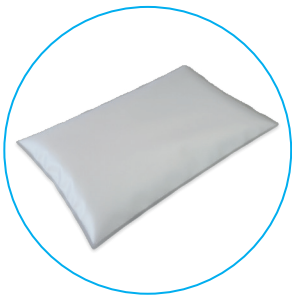
Bag of 100 pcs

Sanitary single-use cover for headphones.

Pearltec Positioning Aids

PearlFit

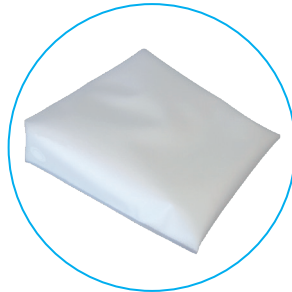
PearlFit positioning aids can be used for stable but yet comfortable patient positioning inside and outside the field of view during all radiological procedures.



PearlFit Cushion

30 x 20 x 4 cm
50 x 20 x 4 cm
50 x 30 x 7 cm
50 x 30 x 10 cm
50 x 50 x 5 cm

Art. 1114
Art. 1124
Art. 1115
Art. 1116
Art. 1142



PearlFit Wedge

26 x 25 x 7 cm
30 x 50 x 15 cm
56 x 50 x 25 cm

Art. 1117
Art. 1138
Art. 1132



PearlFit Roll

Ø = 18, L = 40 cm
Ø = 18, L = 50 cm

Art. 1112
Art. 1113





PearlFit Flex 3

Art. 1119

The PearlFit Flex 3, with a size of 90x50x7 cm can be used as either a cushion, a wedge or roll and can therefore be used for a broad range of examinations.



PearlFit Head/Neck

Art. 1121

The PearlFit Head/Neck is used to support the patient's head when lying in supine position.



PearlFit Forehead

Art. 5005

The PearlFit Forehead consists of two components and is used to support the patient's head in prone position.



Pearltec Positioning Aids

PearlFit Vac

PearlFit Vac positioning aids become stable by withdrawing air and allow a reproducible patient positioning.



PearlFit Cushion Vac

50 x 20 x 4 cm
50 x 30 x 5 cm
50 x 50 x 5 cm
90 x 60 x 5 cm
130 x 60 x 5 cm
200 x 75 x 5 cm

Art. 1131
Art. 1188
Art. 1143
Art. 1144
Art. 1189
Art. 1190



PearlFit Wedge Vac

26 x 25 x 7 cm
30 x 50 x 15 cm
56 x 50 x 25 cm

Art. 1128
Art. 1139
Art. 1133



PearlFit Head/Neck Vac

Art. 1130

The PearlFit Head/Neck Vac is used to support the patient's head when lying in supine position.



Hand Vacuum-Pump

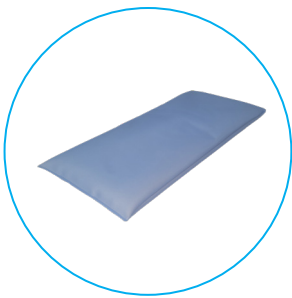
Art. buw-5355

The Hand Vacuum-Pump is MR-compatible and can be used to withdraw air from vacuum cushions.

Pearltec Positioning Aids

Sandbag

The Sandbag positioning aids are sandbags that are welded into a hard-wearing PU foil. They are available in common sizes and are suitable for a range of applications.



Sandbag

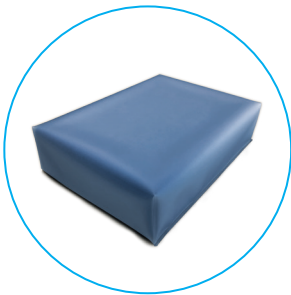
40 x 20 cm, 3kg
30 x 20 cm, 2kg
24 x 18 cm, 1.25kg

Art. 1261
Art. 1262
Art. 1263

Pearltec Positioning Aids

ProFoam-soft

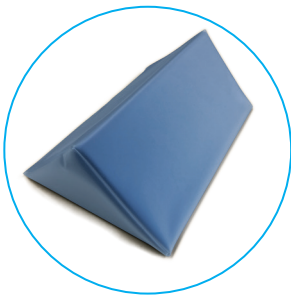
The ProFoam positioning aids are made of a soft foam material and are welded into a durable PU foil. They are available in the most common shapes and sizes and are suitable for a wide range of applications.



ProFoam Plate

25 x 18 x 5 cm

Art. 1150



ProFoam Wedge 45

18 x 25 x 12 cm

18 x 11 x 5 cm

36 x 25 x 12 cm

50 x 25 x 12 cm

60 x 25 x 12 cm

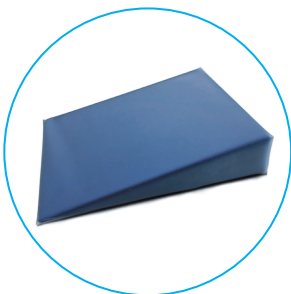
Art. 1151

Art. 1153

Art. 1154

Art. 1193

Art. 1155



ProFoam Wedge 15 / 30

26 x 25 x 7 cm (15 degree)

18 x 25 x 7 cm (15 degree)

18 x 23 x 10 cm (30 degree)

Art. 1152

Art. 1195

Art. 1197

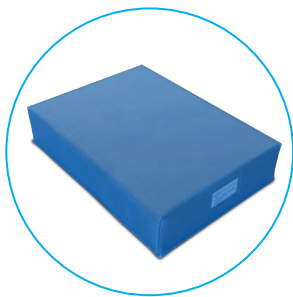
Despite intense use and frequent disinfection, ProFoam surfaces remain intact and thus perfectly hygienic.



Pearltec Positioning Aids

ProFoam DS–stable/hard

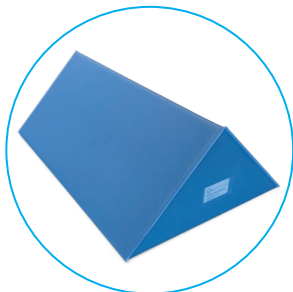
The ProFoam positioning aids DS are made of a dimensionally stable foam material and are welded into a durable PU foil. They are available in the most common shapes and sizes and are suitable for a range of applications.



ProFoam Plate DS

25 x 18 x 5 cm
50 x 30 x 20 cm

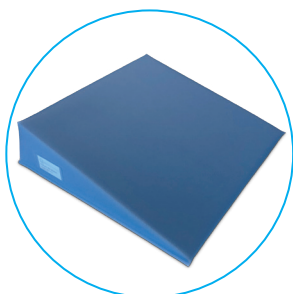
Art. 1158
Art. 1192



ProFoam Wedge 45 DS

18 x 25 x 12 cm
18 x 11 x 5 cm
36 x 25 x 12 cm
50 x 25 x 12 cm
60 x 25 x 12 cm

Art. 1159
Art. 1161
Art. 1162
Art. 1194
Art. 1163



ProFoam Wedge 15 / 30 DS

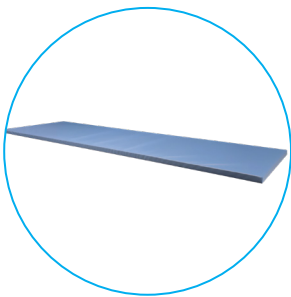
26 x 25 x 7 cm (15 degree)
18 x 25 x 7 cm (15 degree)
18 x 23 x 10 cm (30 degree)

Art. 1160
Art. 1196
Art. 1198

Pearltec Positioning Aids

ProFoam Table Mat

The ProFoam positioning aids DS are made of a dimensionally stable foam material and are welded into a durable PU foil. They are available in different dimensions suitable for all standard examination tables.

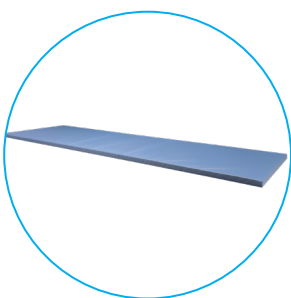


ProFoam Table Mat (anti-slip)

200 x 55 x 3 DS

Art. 1199

The top and bottom of the ProFoam Table Mat DS is made of pure PU foil. Thanks to its anti-slip bottom it stays in the right position.



ProFoam Table Mat (slippery)

200 x 55 x 3 DSR

Art. 1201

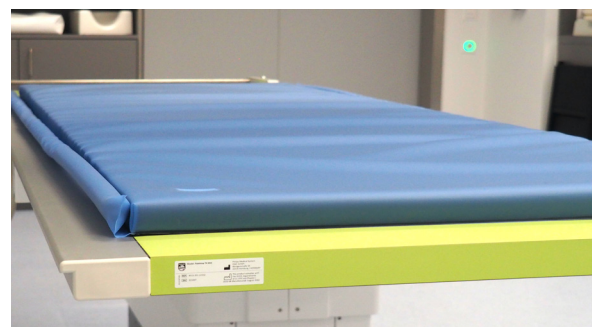
200 x 65 x 3 DSRG with hand grips

Art. 1249

200 x 75 x 3 DSRG with hand grips

Art. 1251

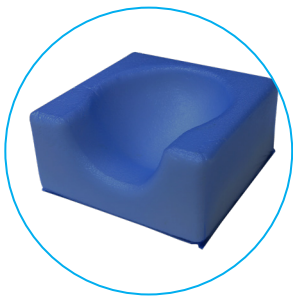
The ProFoam Table Mat (DSR and DSRG) is made with textile-reinforced PU foil on the bottom and allows effortless repositioning of the patient thanks to its sliding properties.



Pearltec Positioning Aids

ProFoam Head

The ProFoam Head positioning aids are made of a stable foam and are welded into a durable PU foil. They are available in two different shapes and are suitable for the use in radiology.

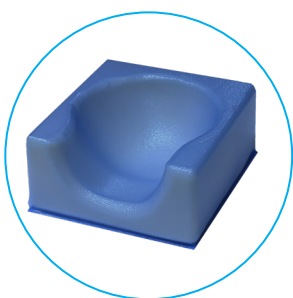


ProFoam Head

Art. 1245

The ProFoam Head is used as a head support when patients are lying supine on the patient table.

Dimensions: 25 x 25 x 12 cm



ProFoam Head/Neck

Art. 1246

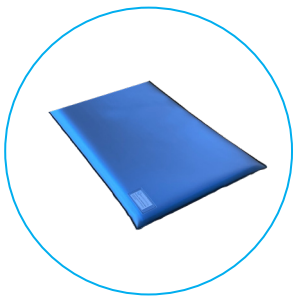
The ProFoam Head/Neck is used as a head support when patients are lying supine on the patient table and provide additional support for the neck.

Dimensions: 24 x 22 x 10 cm

Pearltec Positioning Aids

ProFoam Plate for MRI

The ProFoam Plate positioning aids are made of a stable foam and are welded into a durable PU foil. The thin foam plate prevents direct patient contact with the gantry and thus reduces the risk of burns.

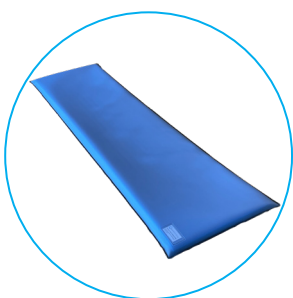


ProFoam Plate 50x25x1 DSR

Art. 1247

The thin ProFoam Plate serves to prevent skin-to-skin contact and thus reduces the risk of burns.

Dimensions: 50 x 25 x 1 cm



ProFoam Plate 100x25x1 DSR

Art. 1248

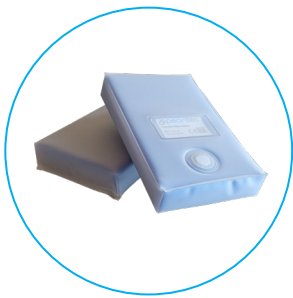
The ProFoam Plate prevents direct patient contact with the gantry and thus reduces the risk of burns.

Dimensions: 100 x 25 x 1 cm

Pearltec Positioning Aids

FoamFit

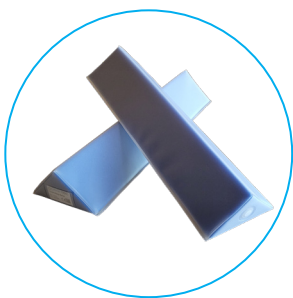
The FoamFit positioning aids are made of a soft foam and are welded into a durable PU foil. Their flexibility and adaptability make them particularly suitable for use inside the coil, where they provide optimal support between the patient and the coil.



FoamFit Plate

13 x 8 x 2 cm
36 x 8 x 2 cm
28 x 18 x 1 cm
30 x 10 x 2 cm
18 x 8 x 2 cm

Art. 1227
Art. 1228
Art. 1233
Art. 1235
Art. 1236



FoamFit Wedge

18 x 11 x 5 cm
36 x 11 x 5 cm
5 x 16 x 7 cm

Art. 1225
Art. 1226
Art. 1234

Pearltec Belt Systems

ProBelt

ProBelt is the first completely hook-and-loop-free belt system and allows a perfectly hygienic fixation of patients on the CT.

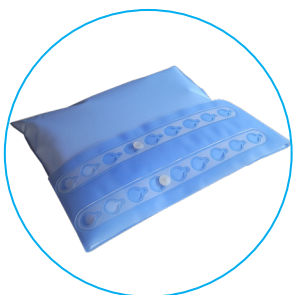


ProBelt

200 R2 for GE	Art. 1170
200 R3 for Siemens and Philips	Art. 1171
200 T5 for Canon	Art. 1172
200 J10 for Philips	Art. 1241
200 Extension for all ProBelt 200 products	Art. 1213
350 R2 for GE	Art. 1214
350 R3 for Siemens and Philips	Art. 1215
350 T5 for Canon	Art. 1216
350 J10 for Philips	Art. 1242
350 Extension for all ProBelt 350 products	Art. 1217

The ProBelt belts are available in widths of 200 mm and 350 mm, are inserted into the dedicated table rail and closed by means of a hook eyelet.

[Watch Video](#)



ProBelt 200 Thorax PFC*

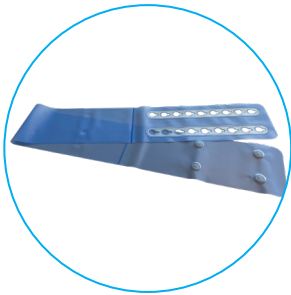
Art. 1173

The ProBelt Thorax System helps to fix the arms to the patient's upper body and is especially used for polytrauma and thoracic abdomen CT examinations.

* New version with optimized measurements and blue PU-foil.

[Watch Video](#)





ProBelt Wrap

200 (L = 200 cm, W = 20 cm)

Art. 1187

70 (L = 145 cm, W = 7 cm)

Art. 1220

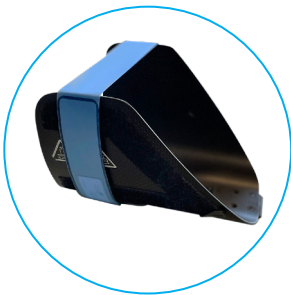
350 (L = 200 cm, W = 35 cm)

Art. 1229

The ProBelt Wrap is placed underneath the mat and wrapped around the patient for a proper stabilization. The ProBelt Wrap is fastened with a hook eyelet.



[Watch Video](#)



ProBelt VL/VH

50 VL for Canon, Philips and Siemens

Art. 5008

50 VH for GE

Art. 5009

ProBelt 50 VL/VH are attached to the CT cradle and wrapped around the patient's forehead. ProBelt 50 are compatible with CT head holders of all common equipment manufacturers and offer a quick and hygienic head stabilization.



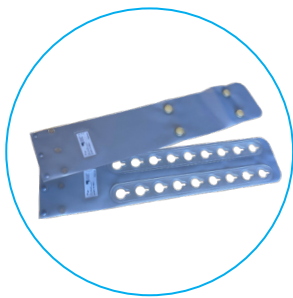
[Watch Video](#)



Pearltec Belt Systems

ProBelt For MRI

ProBelt is the first, completely hook-and-loop-free belt system and allows a perfectly hygienic fixation of patients on the MRI table. Due to the rail system, they are only suitable for the MRI.



ProBelt

140 MRI P for Philips

Art. 1219

140 MRI P Extension for Philips

Art. 1240

200 U5 for Canon

Art. 1259

200 R2 for GE

Art. 1170

200 Extension for all ProBelt 200 Product

Art. 1213

350 U5 for Canon

Art. 1260

350 R2 for GE

Art. 1214

350 Extension for all ProBelt 350 Product

Art. 1217

Please contact us for fixation belts of other MRI manufacturers.

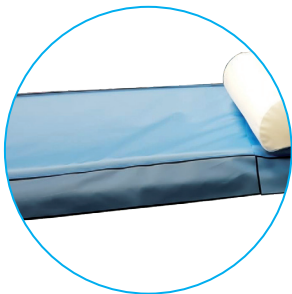
[Read Case Study](#)



Pearltec Table Cover

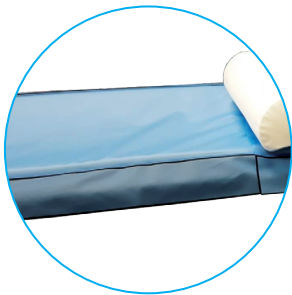
CT Table Cover

The CT Table Covers are protective sleeves made of PU foil and are available for CT table covers from various manufacturers. The specially designed flaps provide additional safety and the high-quality materials and workmanship make the product hard-wearing and durable.



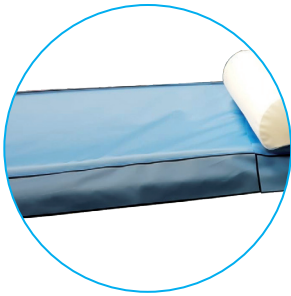
CT Table Cover for Canon

2090 mm mat length	Art. 1164
2360 mm mat length	Art. 1166
1790 mm mat length	Art. 1165
1860 mm mat length	Art. 1167
2070 mm mat length	Art. 1168
400 mm table extension	Art. 1169
310 mm table extension	Art. 1175



CT Table Cover for Siemens

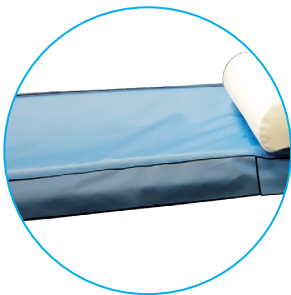
2190 S mm mat length	Art. 1177
2190 S46 mm mat length, narrow	Art. 1212
2170 S46 mm mat length, thin	Art. 1211
2400 S mm mat length	Art. 1209
2400 S46 mm mat length, narrow	Art. 1223
350 S mm table extension	Art. 1210



CT Table Cover for GE

2170 G mm mat length
 2720 G mm mat length
 2580 G mm mat length
 2100 G mm mat length
 2630 G mm mat length
 270 G mm table extension
 370 G mm table extension

Art. 1184
 Art. 1205
 Art. 1206
 Art. 1207
 Art. 1221
 Art. 1185
 Art. 1208



CT Table Cover for Philips

2220 P mm mat length
 2320 P44 mm mat length
 2100 P mm mat length
 2450 P mm mat length
 2580 P44 mm mat length
 2700 P44 mm mat length

Art. 1183
 Art. 1203
 Art. 1204
 Art. 1224
 Art. 1239
 Art. 1244

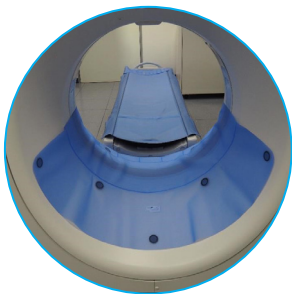


[Watch Video](#)

Pearltec Gantry Cover

CT Gantry Cover

The CT Gantry Covers are protective covers made of PU foil, which are attached to the gantry with Hook-and-loop dots to protect the CTs from liquids.



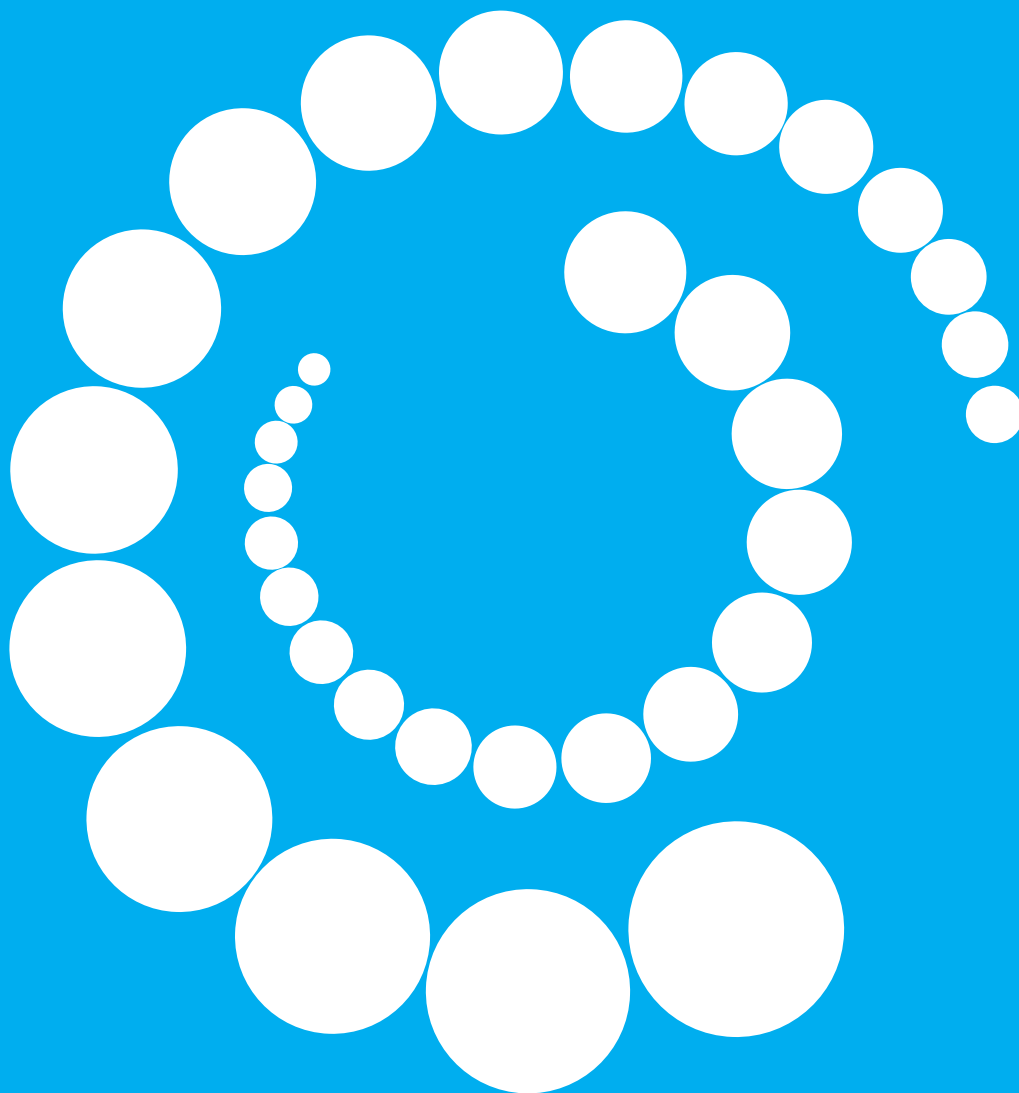
CT Gantry Cover C33

Art. 1231

Available for Canon Prism, Genesis, Prime and Lightning.

For other CT models upon request.





Pearl Technology AG
Wiesenstrasse 33
8952 Schlieren
+41 43 535 08 40
info@pearl-technology.ch
www.pearl-technology.ch